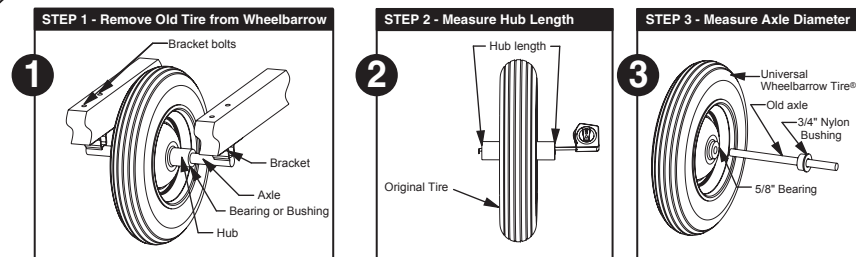
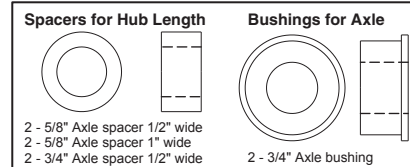


Universal Fit Air Filled Wheelbarrow Tire® Installation Instructions



STEPS

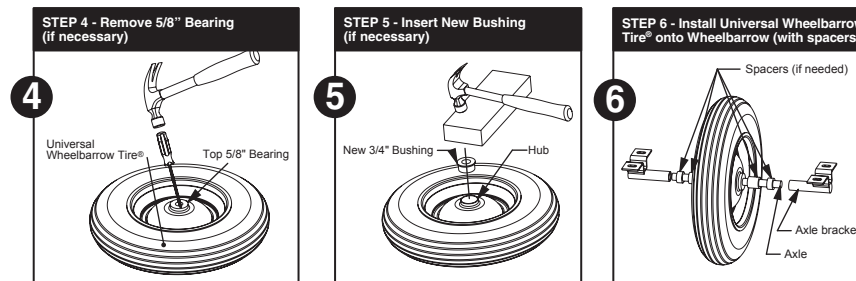
- 1 Remove old tire from wheelbarrow. Start by removing one or both axle brackets.
- 2 Measure the hub length of old tire with a tape measure through the axle hole. Calculate the # of spacers needed.
- 3 Measure the axle diameter with existing axle. If axle is too big check the included 3/4" bushings.*
- 4 Remove 5/8" bearing (if necessary). If 3/4" bushing fits then remove the 5/8" bearings by hitting a screwdriver from the back side of the bearing. Locate the screwdriver in different quadrants to reduce binding of the bearing.
- 5 Insert new bushing (if necessary) by placing a block of wood on top of the bushing and hitting the block with a hammer (block protects bushing).
- 6 Install Universal Wheelbarrow Tire® onto equipment. Install axle through hub and add spacers (if necessary) from measurement in #2 and re-attach axle brackets.



Warning: Maximum inflation is 30 PSI. Use safety glasses and gloves when inflating and installing. Use manual pump only to inflate.

*If the included bearing/bushings do not fit your equipment you may want to use your existing wheel's bearings/bushings. See step #4 and #5. Or contact Marathon and we can send the correct size at no charge - 877.425.1640 or customerservice@marathonind.com.

Visit www.marthontires.com for further instructions and information.



Marathon
Industries